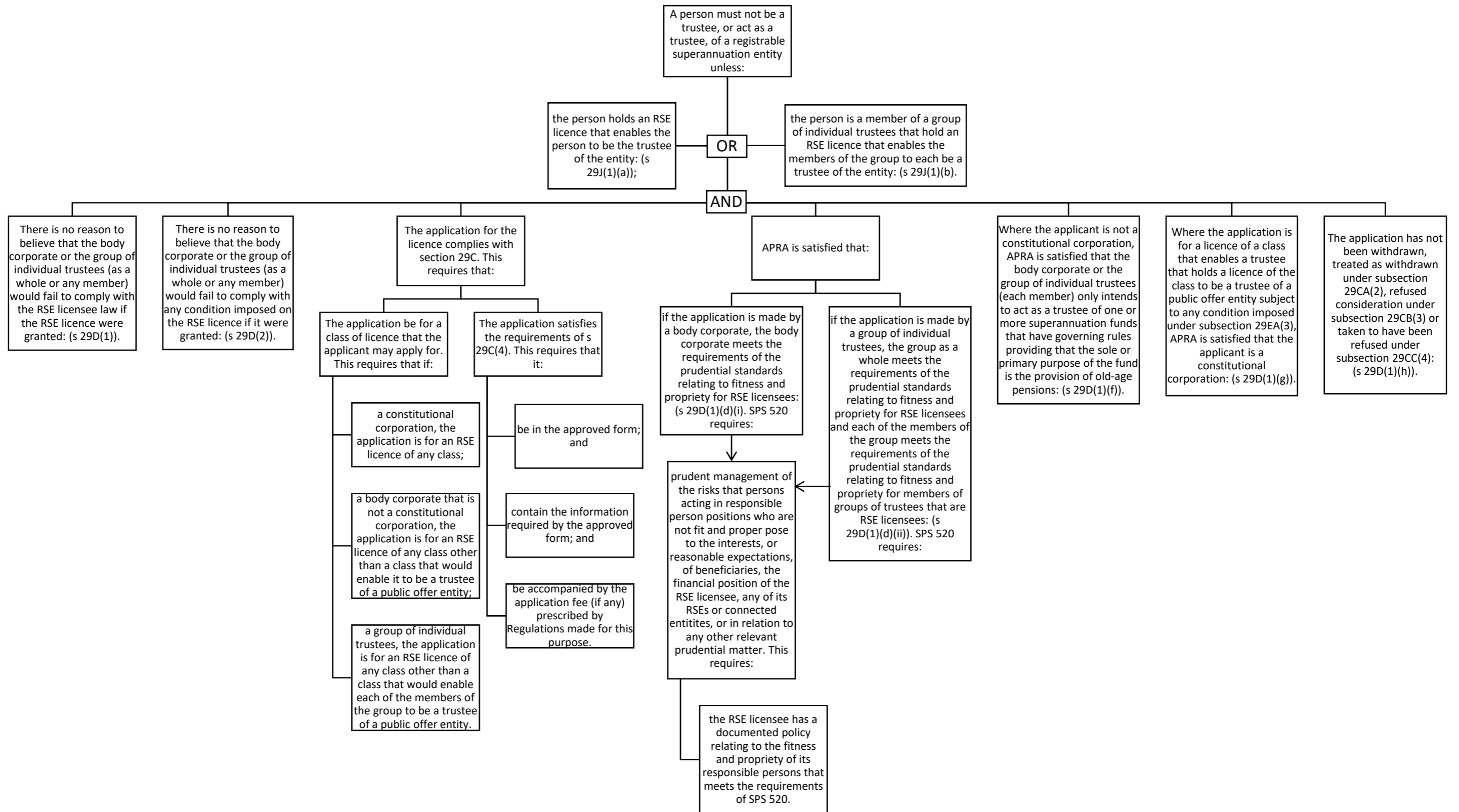


Obligation to hold an RSE licence pursuant to s 29J of the *Superannuation Industry (Supervision) Act 1993* (Cth)



Look to Register of Exemptions to the requirement to hold a licence under s 911A of the *Corporations Act 2001* (Cth), s 29 of the *National Consumer Credit Protection Act 2009* (Cth) and s 29 of the *Superannuation Industry (Supervision) Act 1993* (Cth).

**No exemptions are noted on this map pursuant to s 29 of the *Superannuation Industry (Supervision) Act 1993* (Cth).

NB: Refer to Register to of RSE Licensee Obligations for analysis of obligations that apply to the holder of an RSE Licence.

